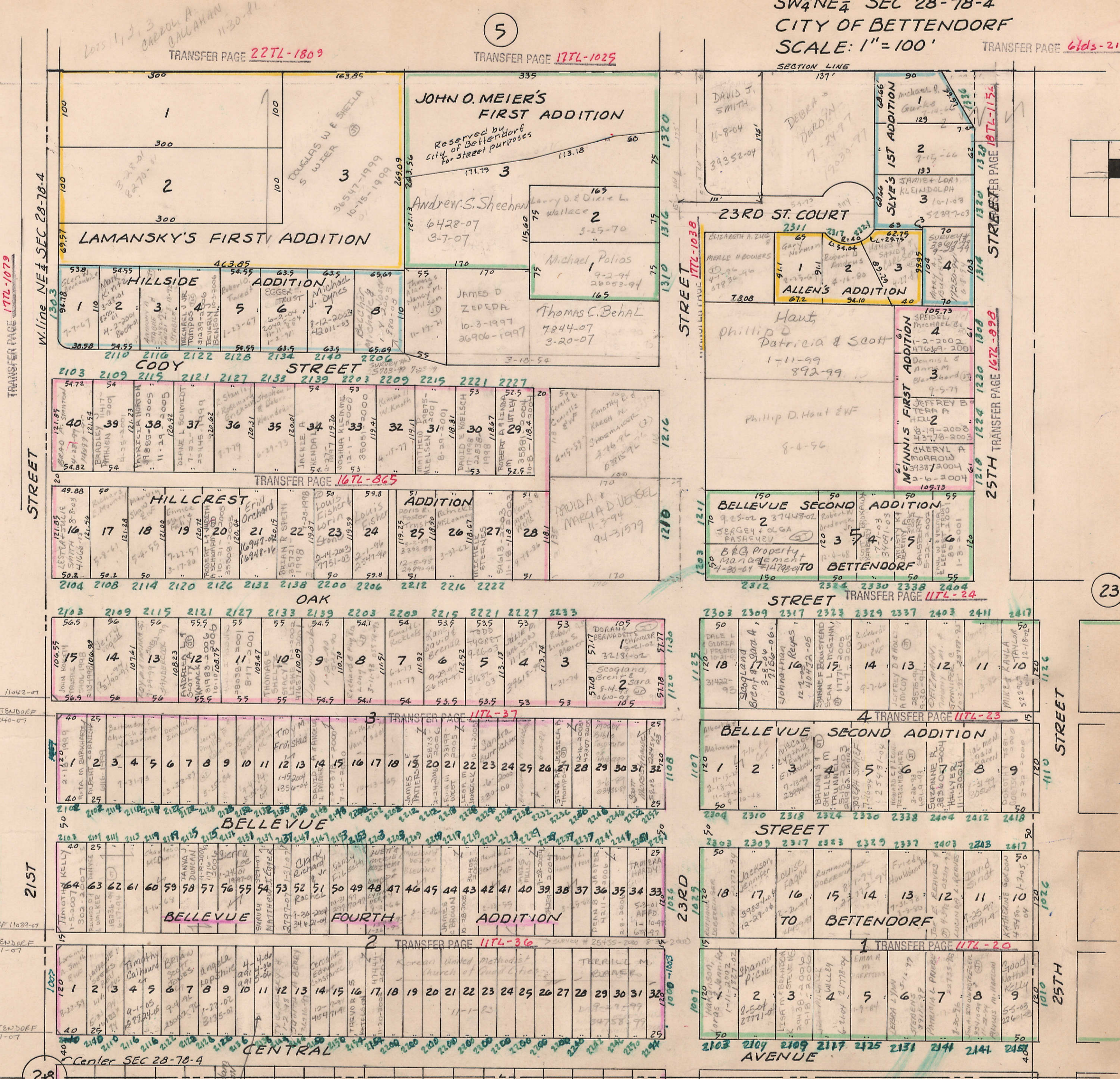


5



TRANSFER PAGE 172L-1079

W. line NE 1/4 SEC 28-78-4

19

23

CITY OF BETTENDORF 11042-07

CITY OF BETTENDORF 11040-07

CITY OF BETTENDORF 11039-07

CITY OF BETTENDORF 11041-07

CITY OF BETTENDORF 11041-07

28

BETT. BK. B. Pg. 21
Pgs. 21, 22, 27 & 28 Old Bk. B
Oct. 1980

37